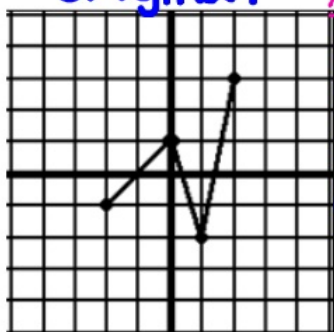


Bellwork: 10/22/12

Perform the indicated transformations: \rightarrow $h = -3$ left
 $x\text{value} - 3$

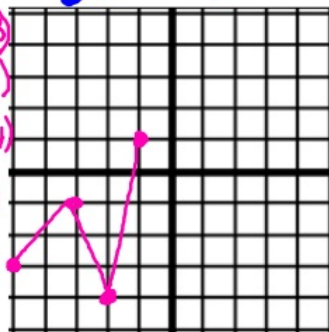
original



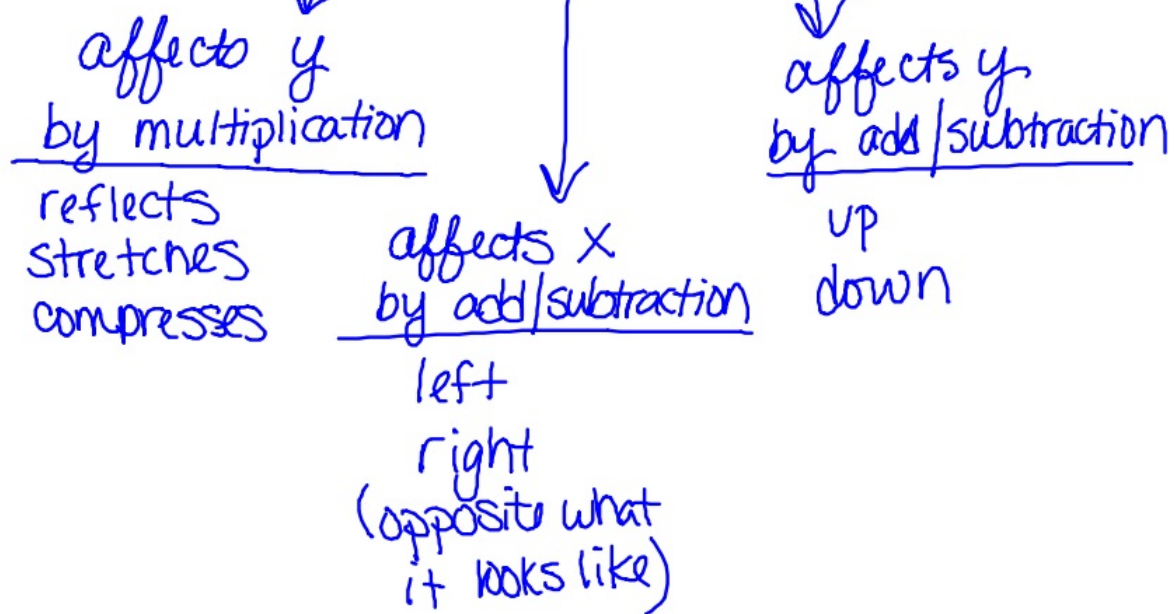
$x-3$	$y-2$
$(-2, -1)$	$(-5, -3)$
$(0, 1)$	$(-3, -1)$
$(1, -2)$	$(-2, -4)$
$(2, 3)$	$(-1, 1)$

$y(x+3)-2$

$\rightarrow k = -2$
down
 $y\text{value} - 2$



$$y = a f(x-h) + k$$



NOTES - Transformations - Putting It All Together

Using the given the graph, perform the following transformations.

